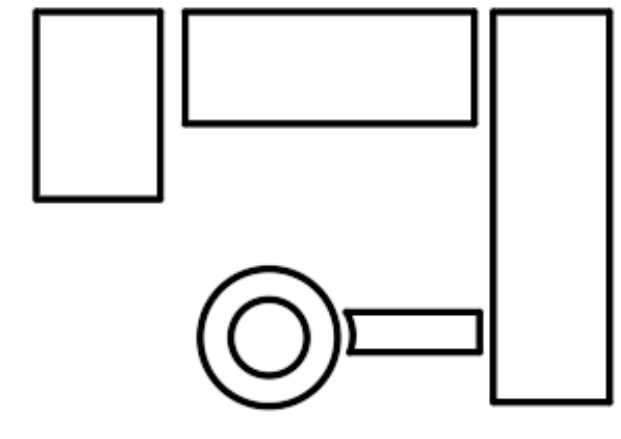
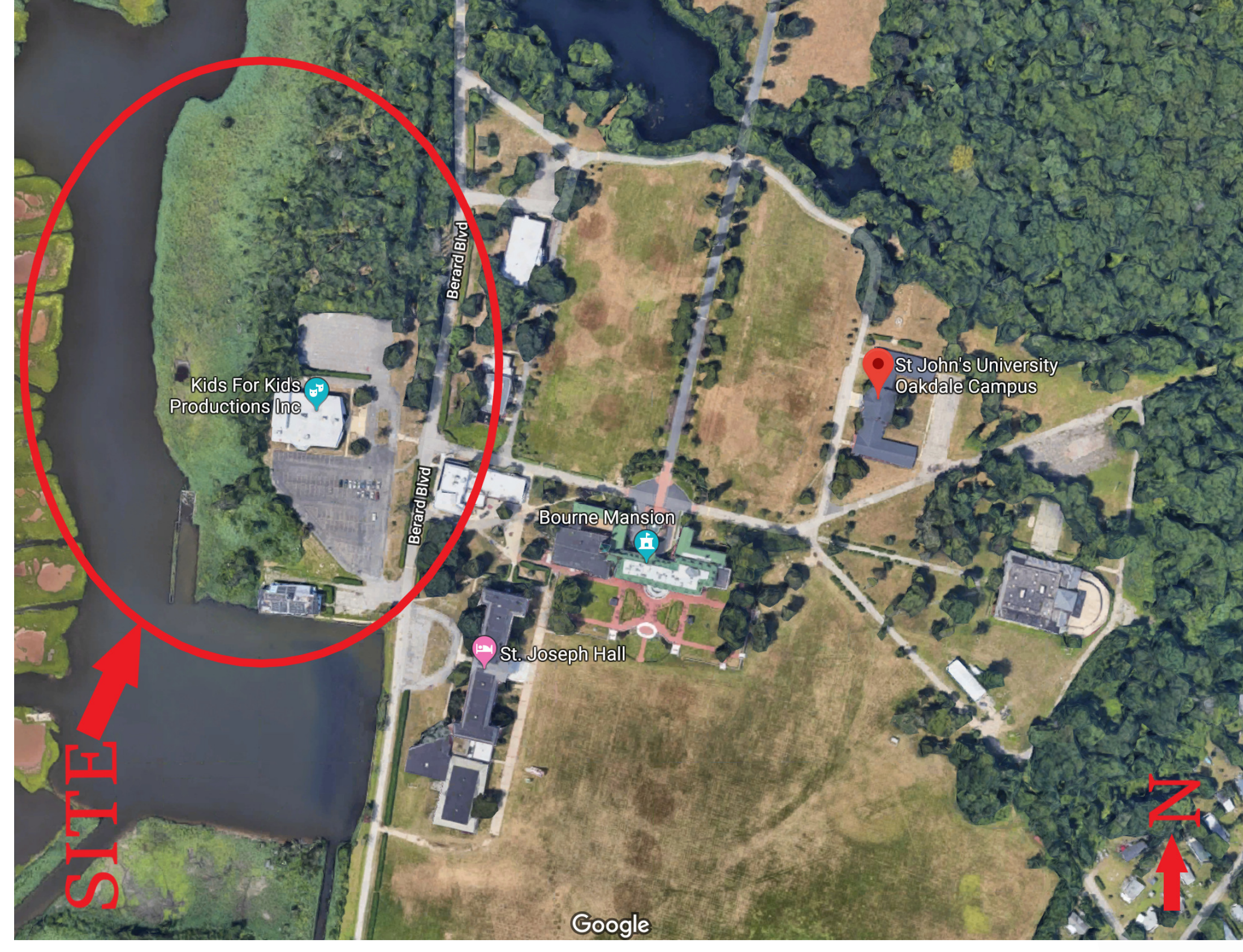
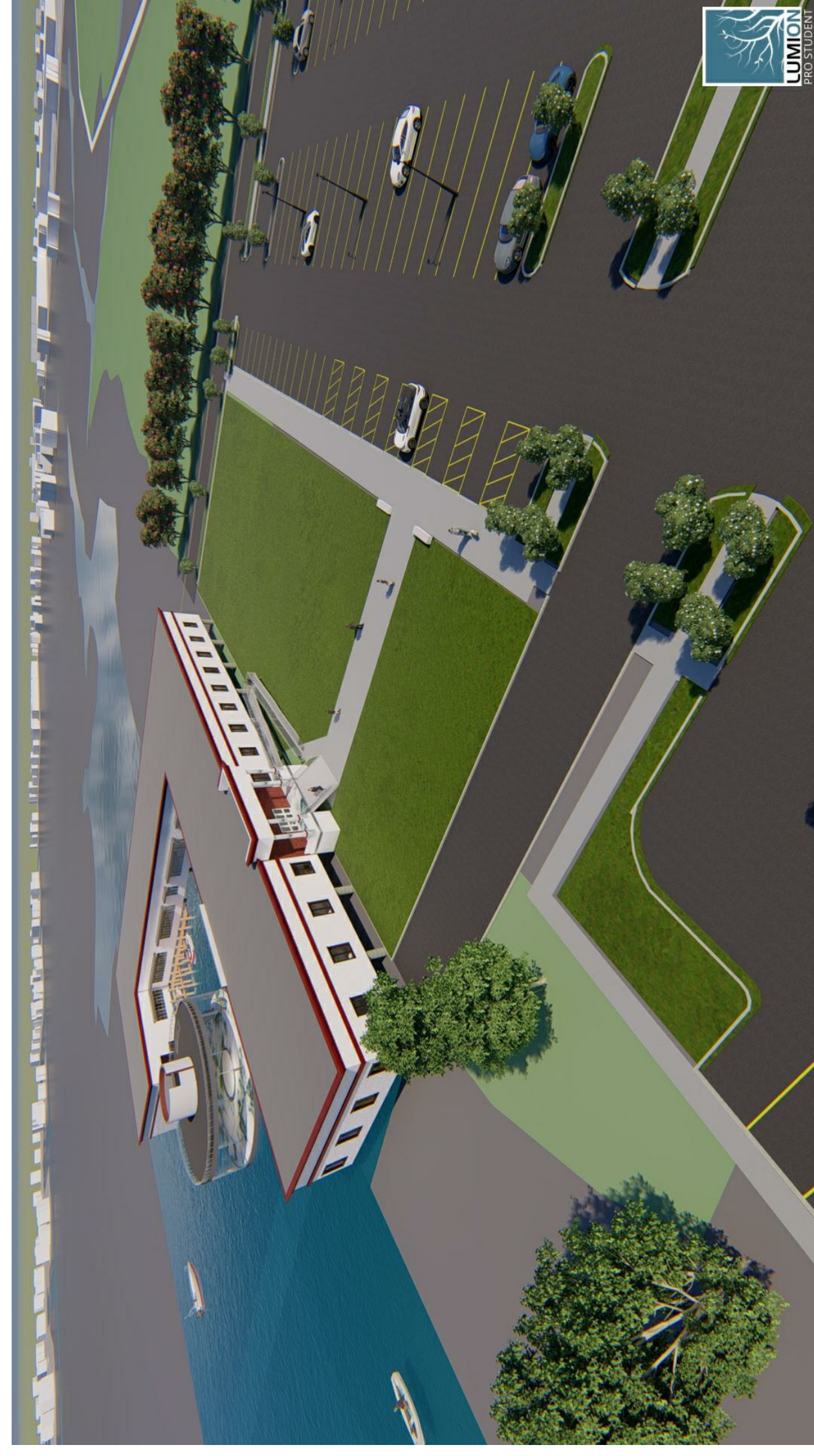


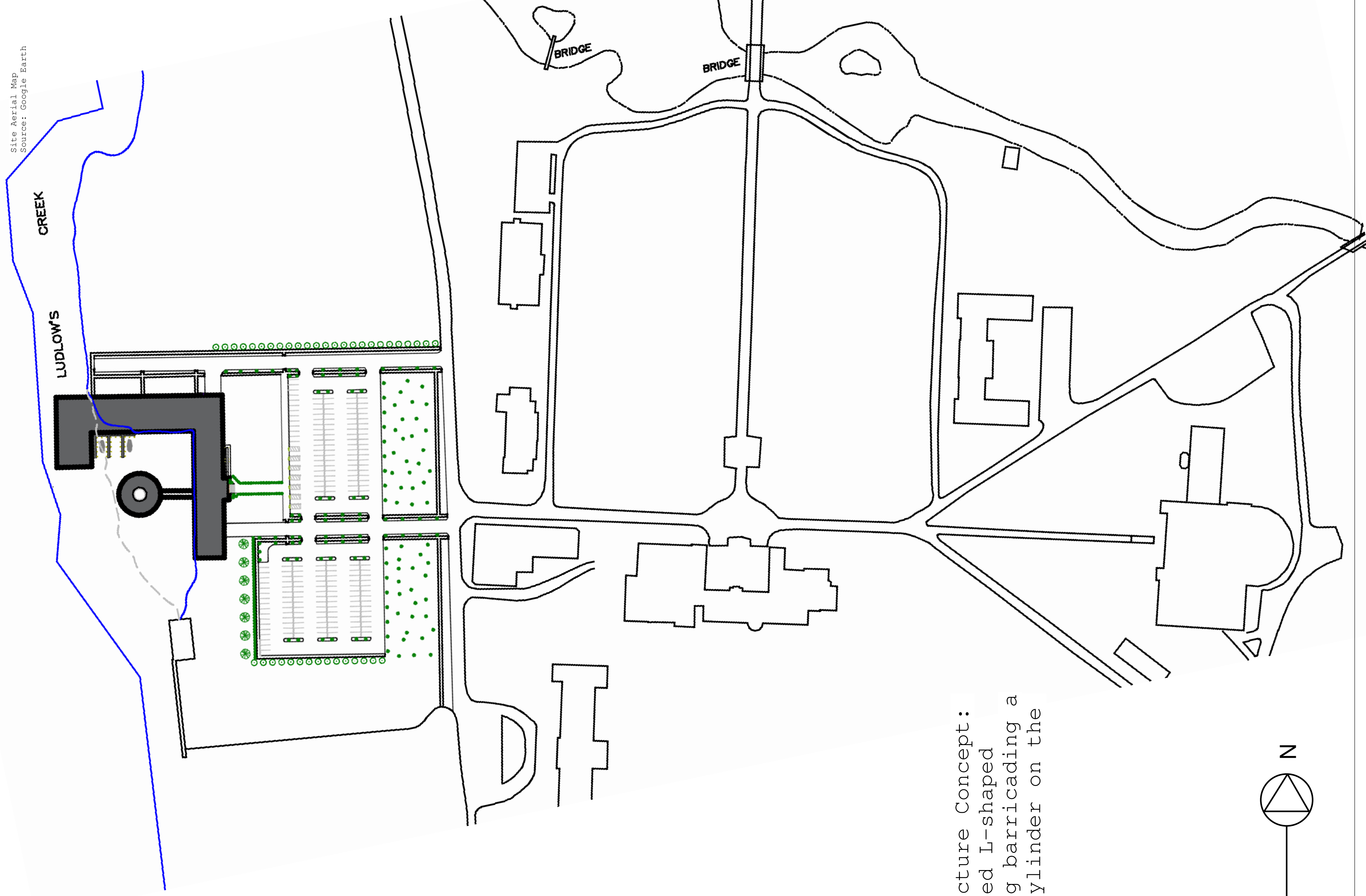
PARTI



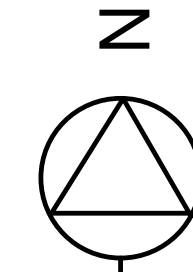
ADDITIVE/SUBTRACTIVE



Site Aerial Map  
Source: Google Earth



Architecture Concept:  
"A denser I-shaped building barricading a glass cylinder on the water."



Site Plan

Scale: NTS

Farmingdale  
State College  
State University of New York

Marine Research Lab

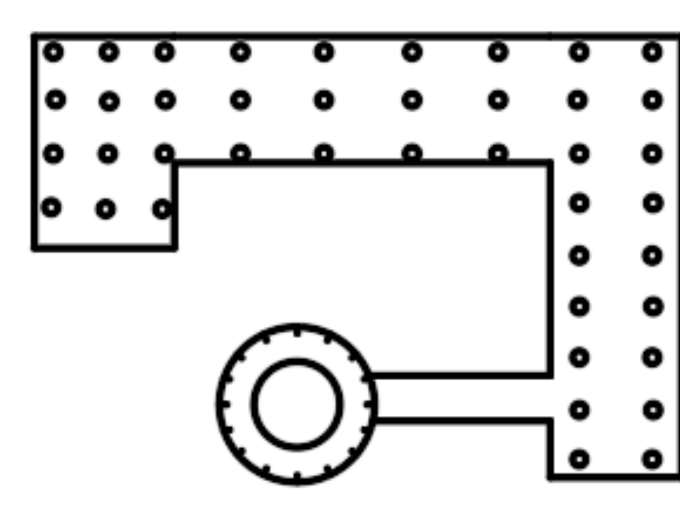
Site Plan

Mary Villanueva  
ARC 476 - DESIGN IV  
FALL 2019  
Prof. Lopiccio  
Date: 11 Dec. 2019

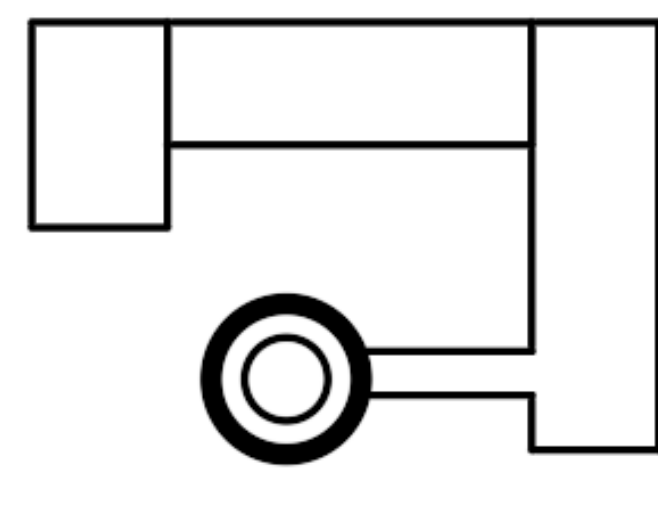
A101

Scale

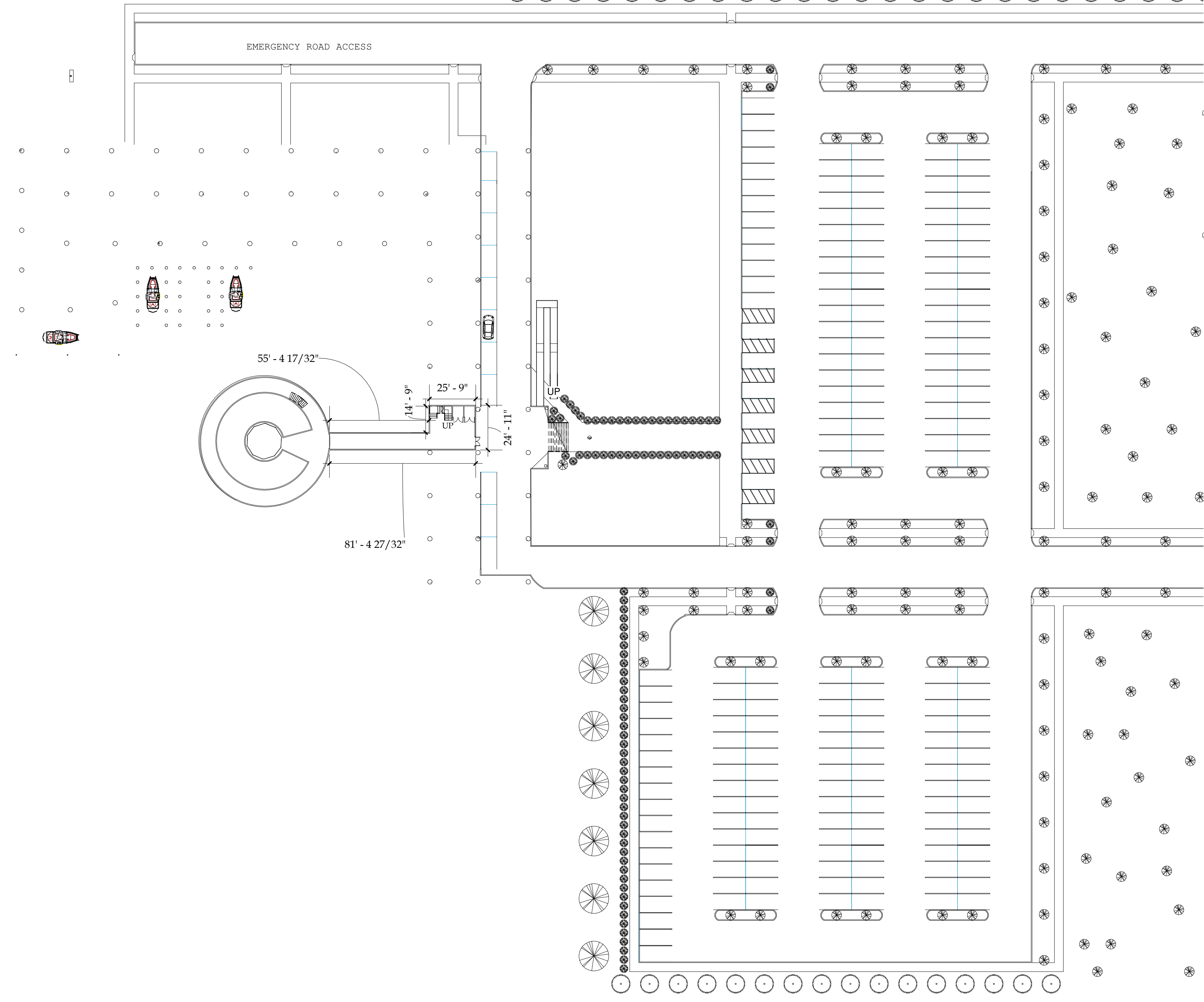




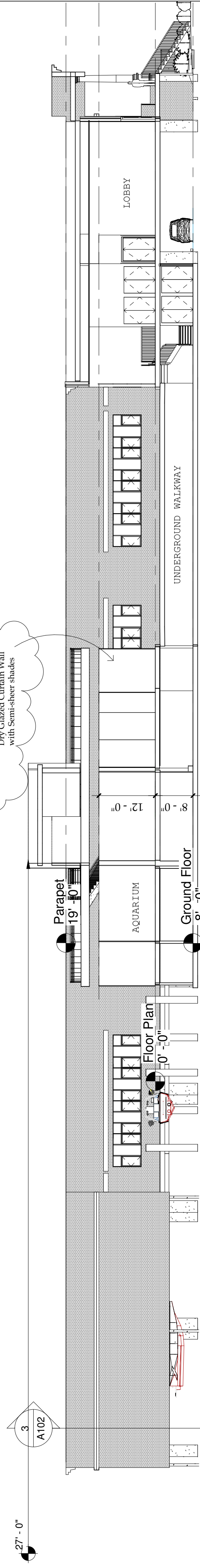
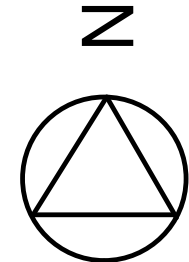
STRUCTURE



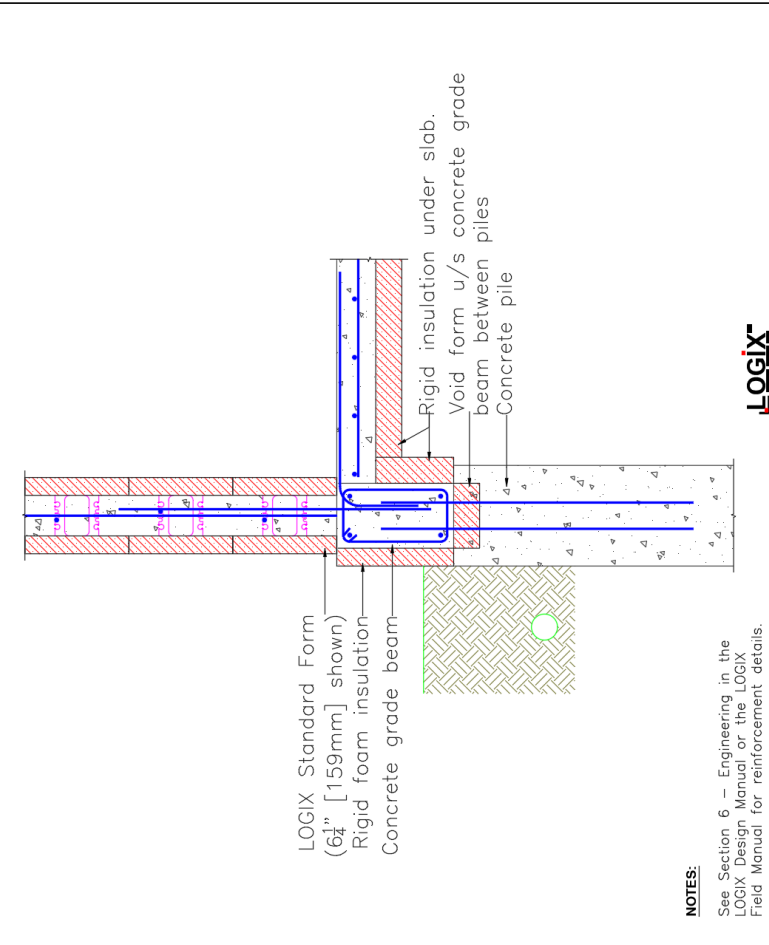
HEIRARCHY



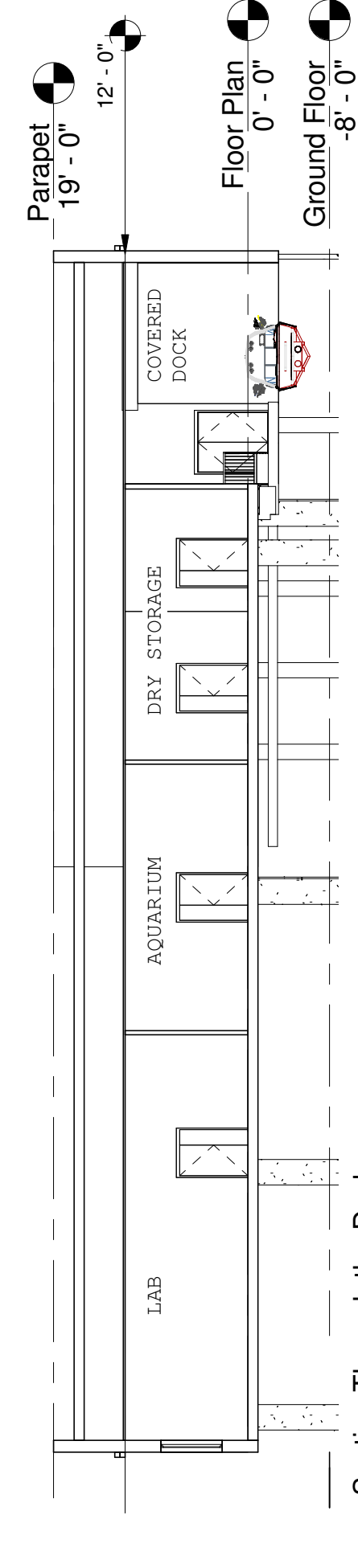
Ground Floor  
Scale: 1" = 40'



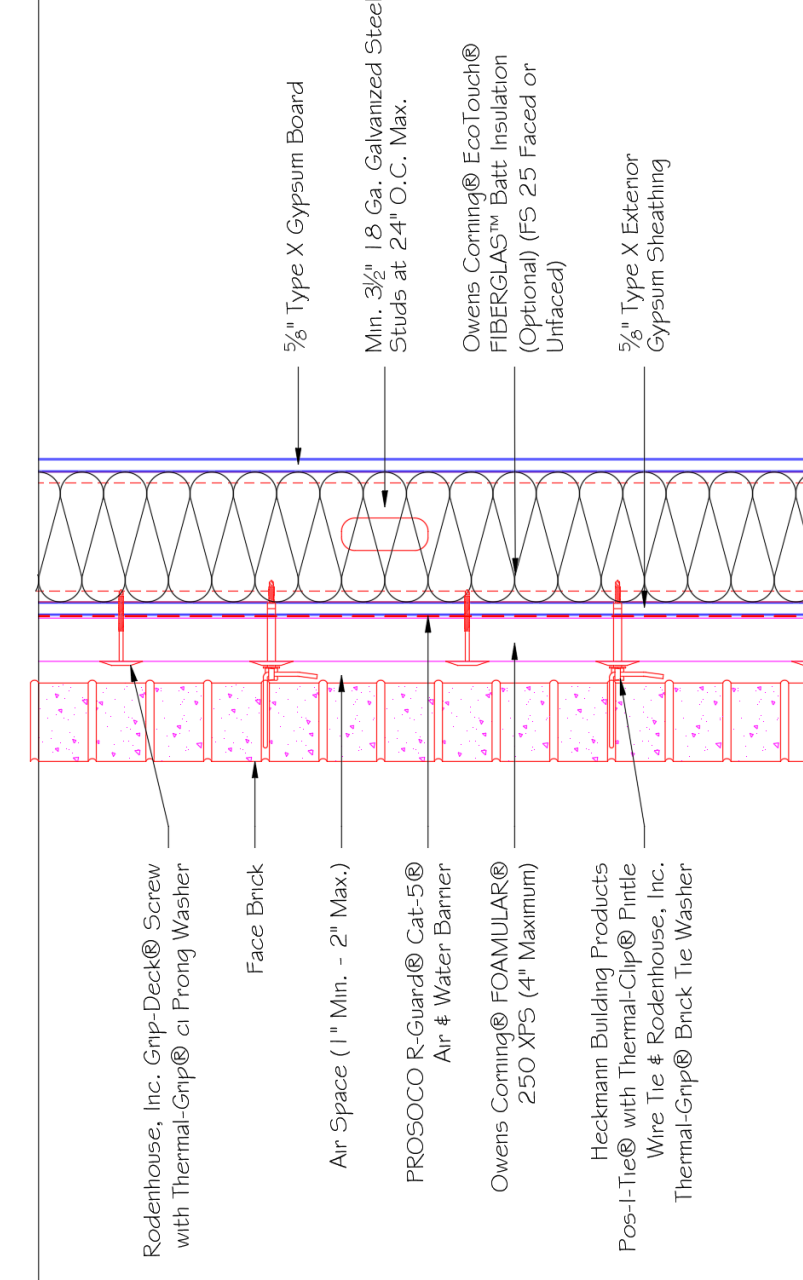
Section Through the Lobby and Aquarium  
Scale: 1/16" = 1'-0"



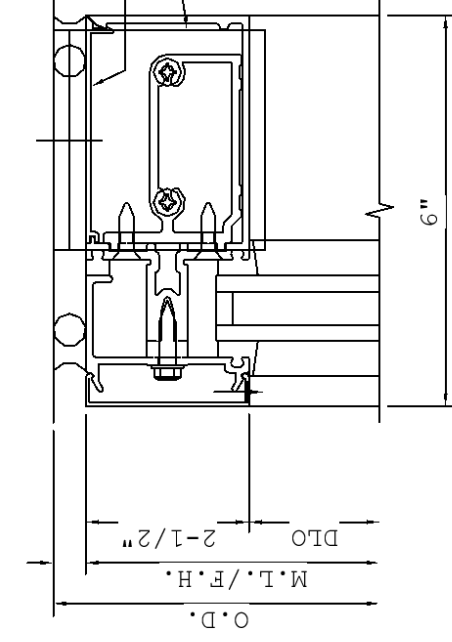
5 EXTERIOR WALL ON PILE SUPPORTED GRADE BEAM  
SCALE: NTS



Section Through the Dock  
Scale: 1/16" = 1'-0"

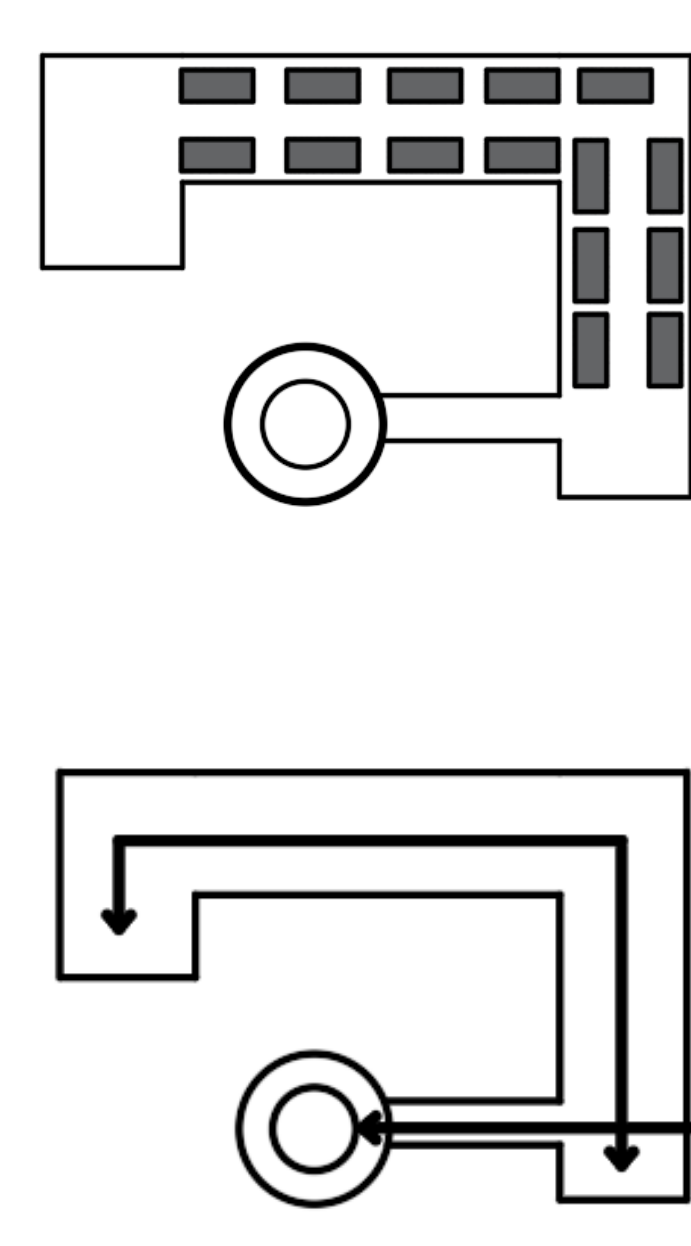
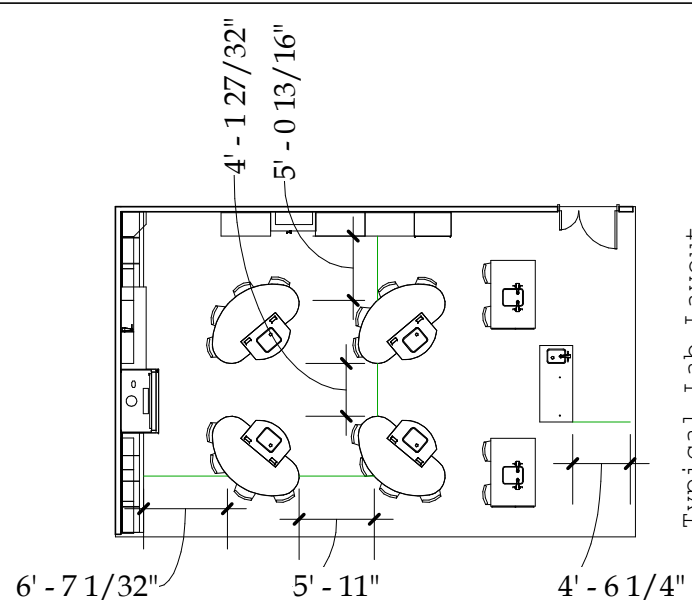
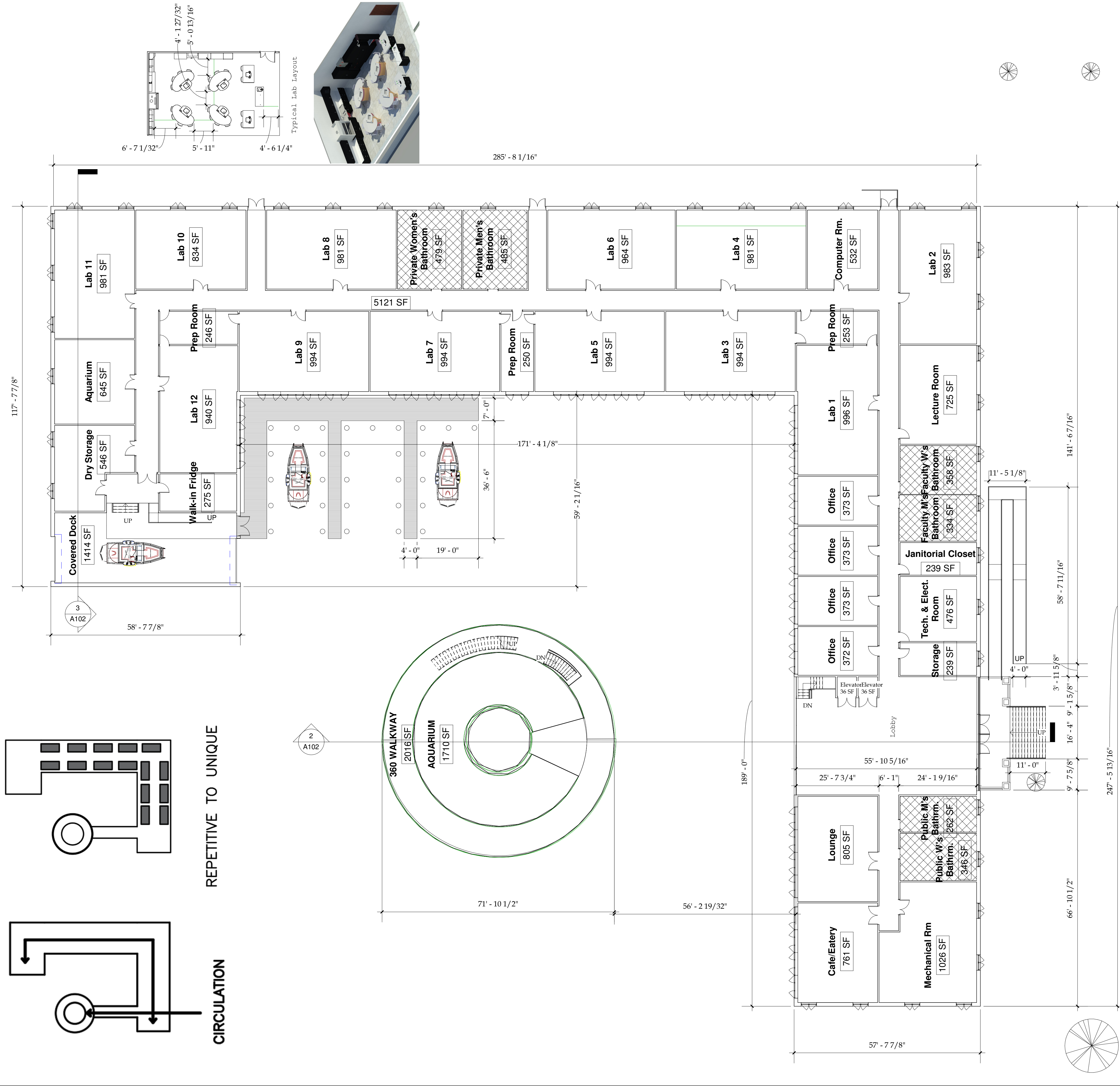


1 Brick Veneer on Metal Stud Wall Detail Section  
Scale: NTS



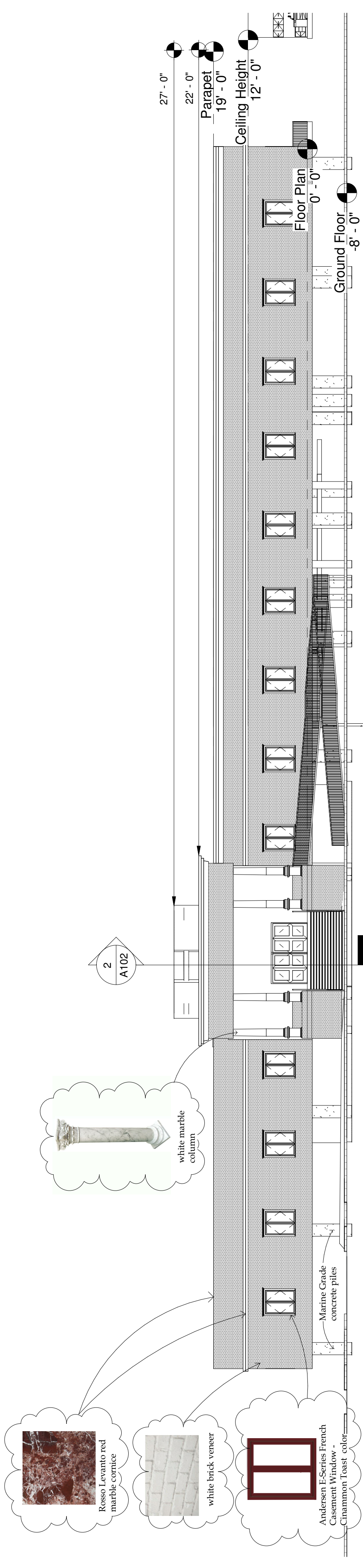
4 CURTAIN WALL DETAIL  
SCALE: NTS





REPETITIVE TO UNIQUE  
CIRCULATION

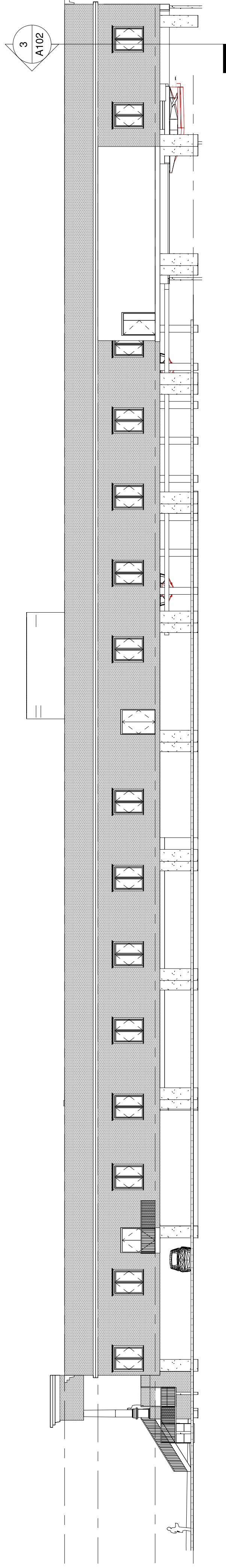
First Floor Plan  
Scale: 1/16" = 1'-0" N



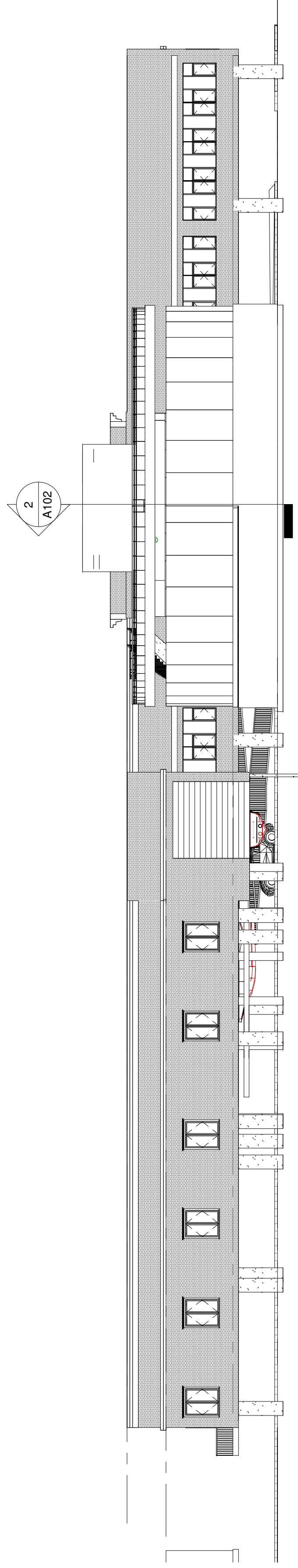
2 Front Elevation (East)  
1/16" = 1'-0"



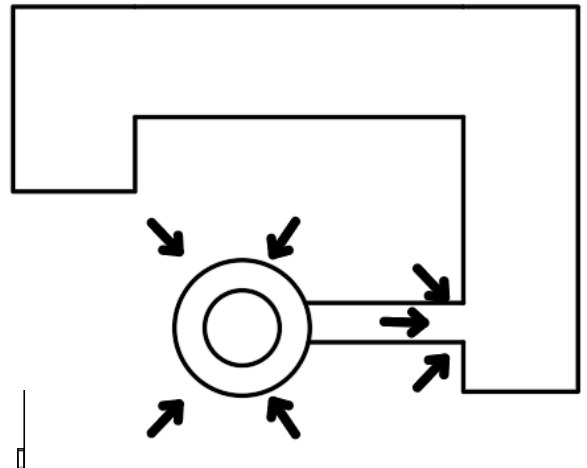
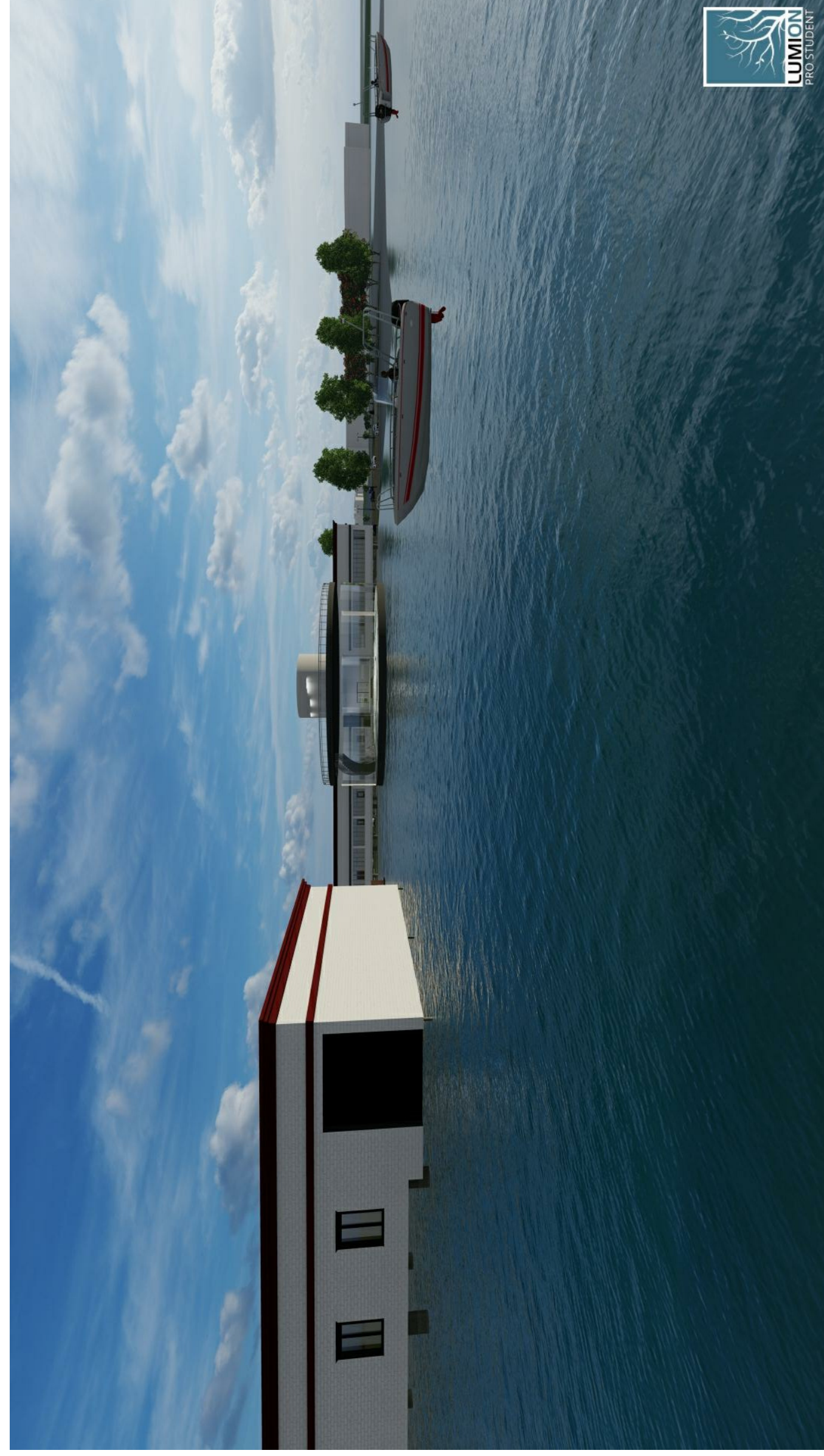




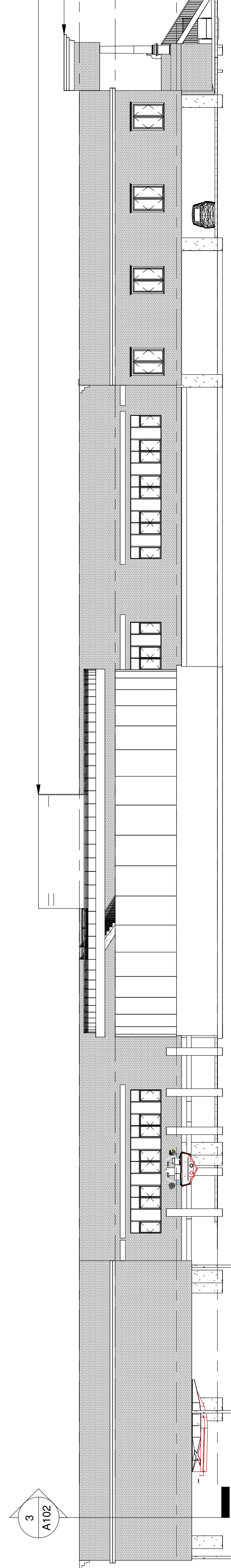
1 Right Elevation (North)  
1/16" = 1'-0"



3 Rear Elevation (South)  
1/16" = 1'-0"



NATURAL LIGHT

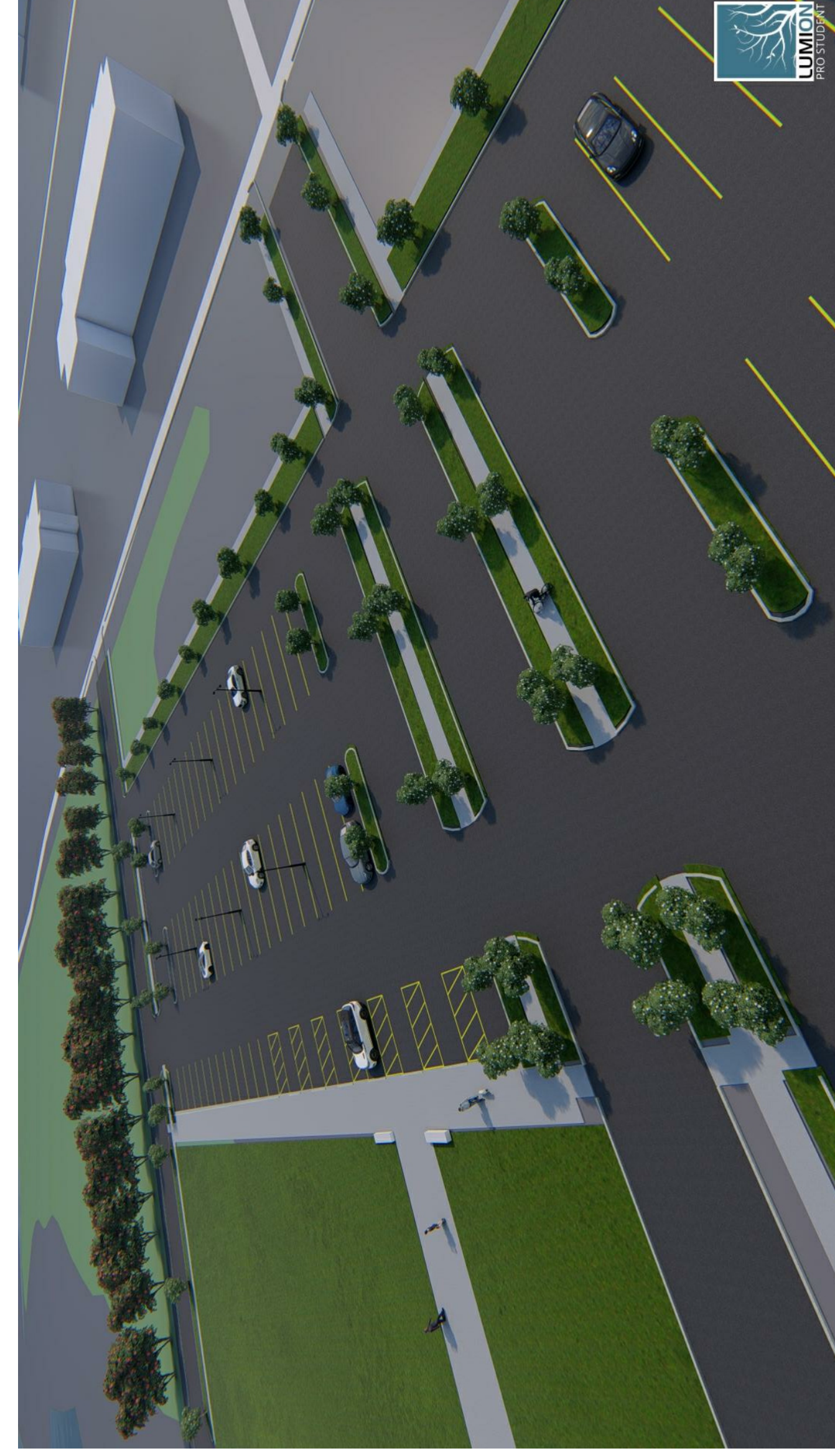


2 Left Elevation (West)  
1/16" = 1'-0"

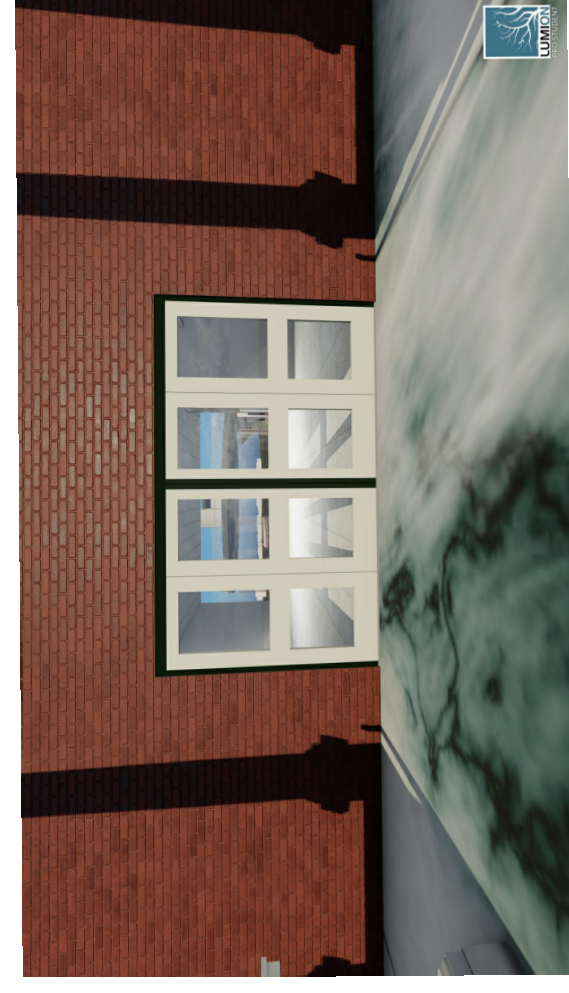
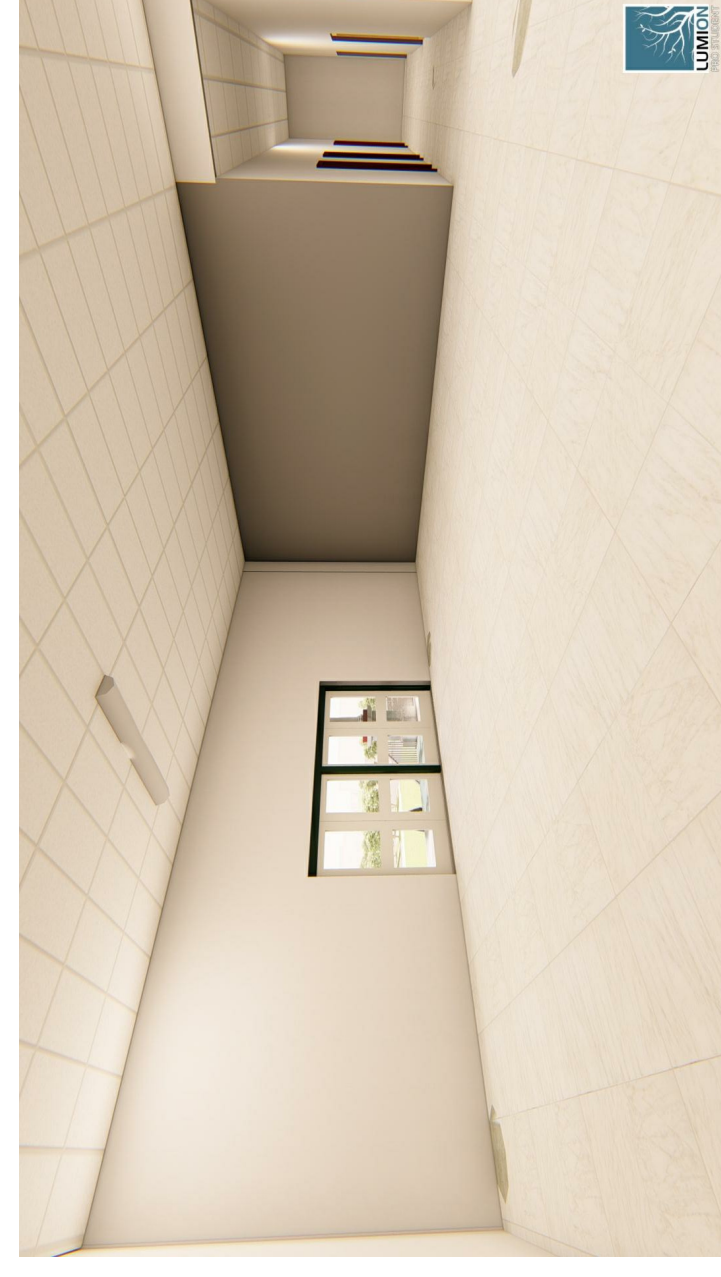




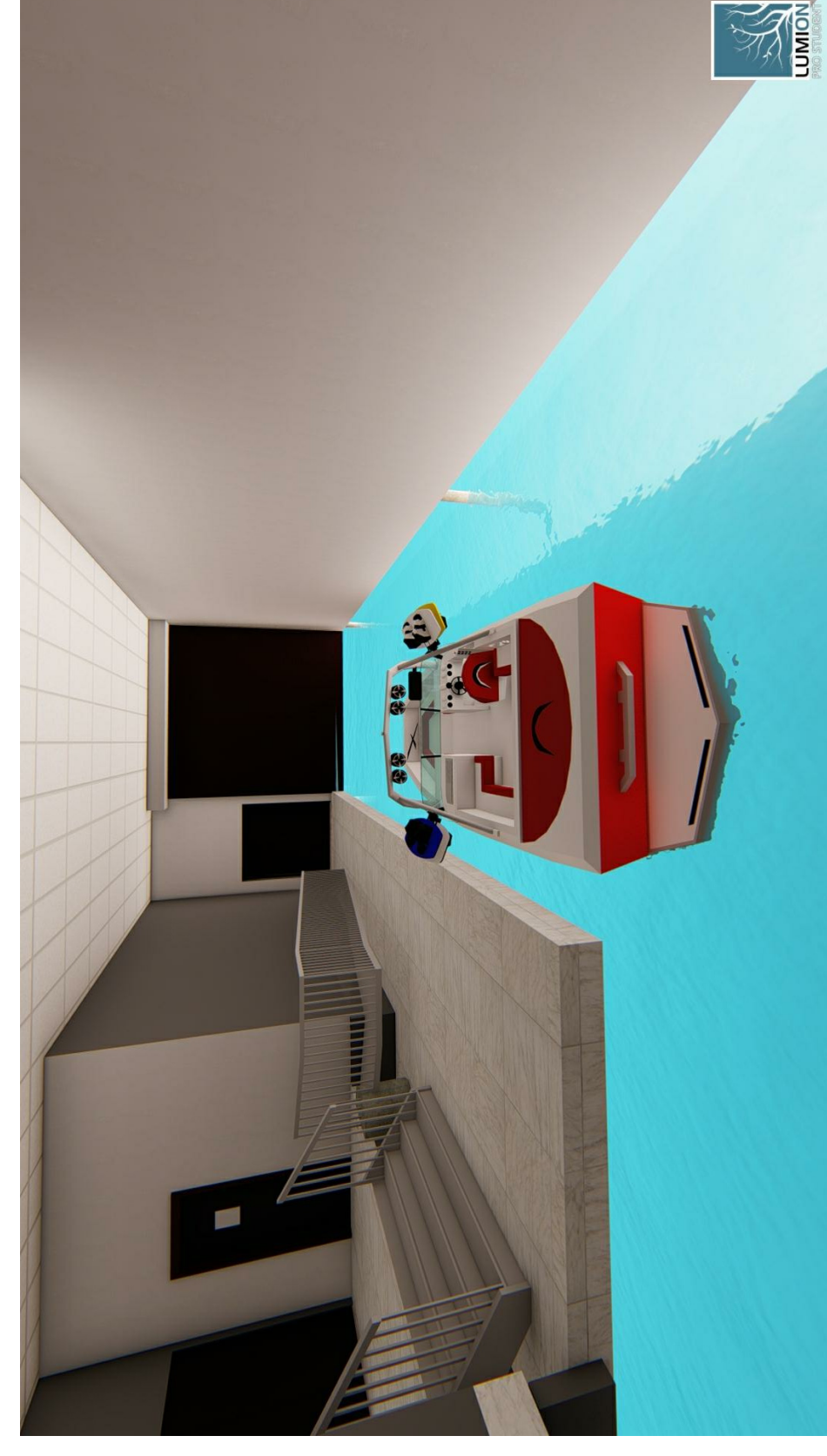
# FRONT & SITE



# INTERIOR



LOBBY



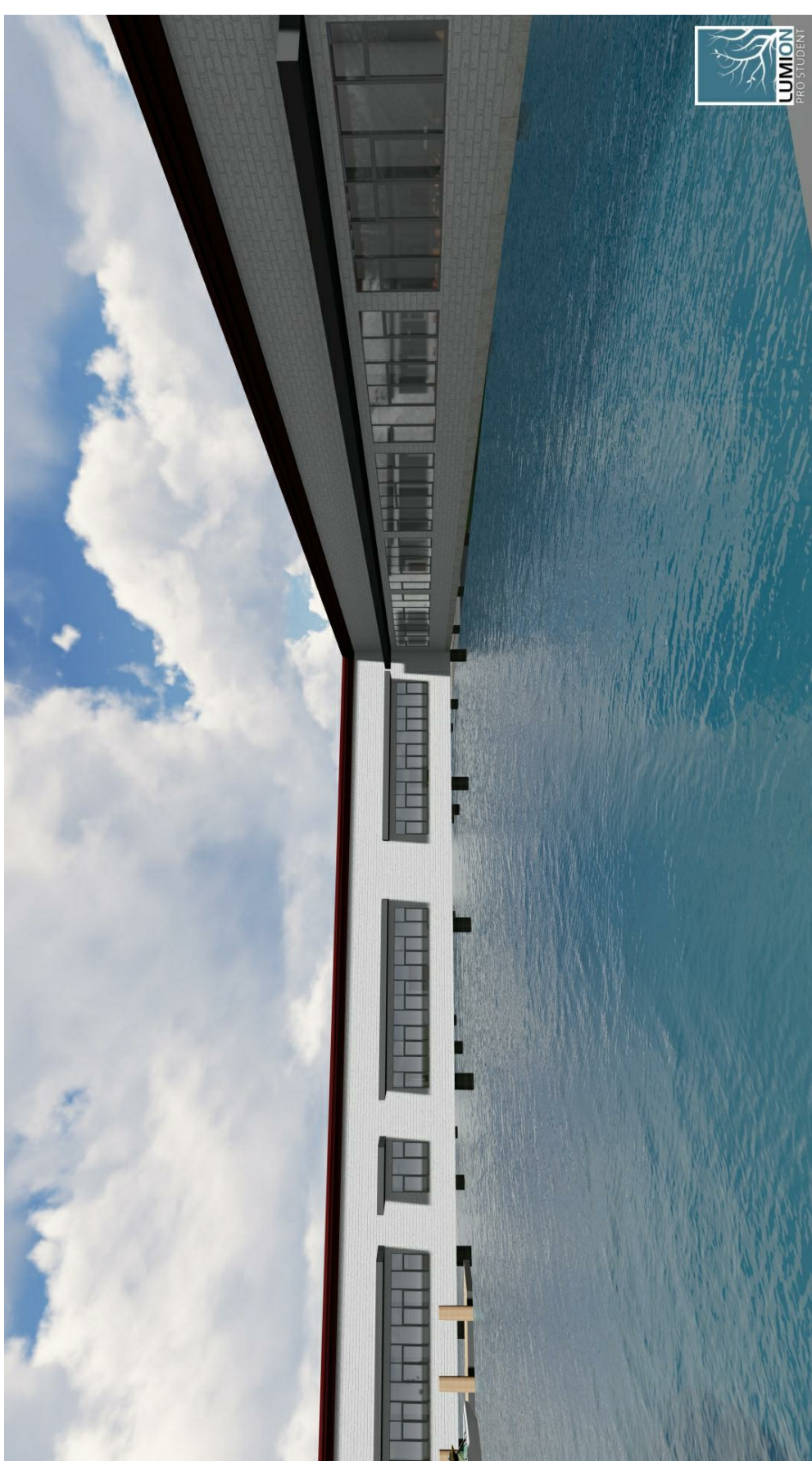
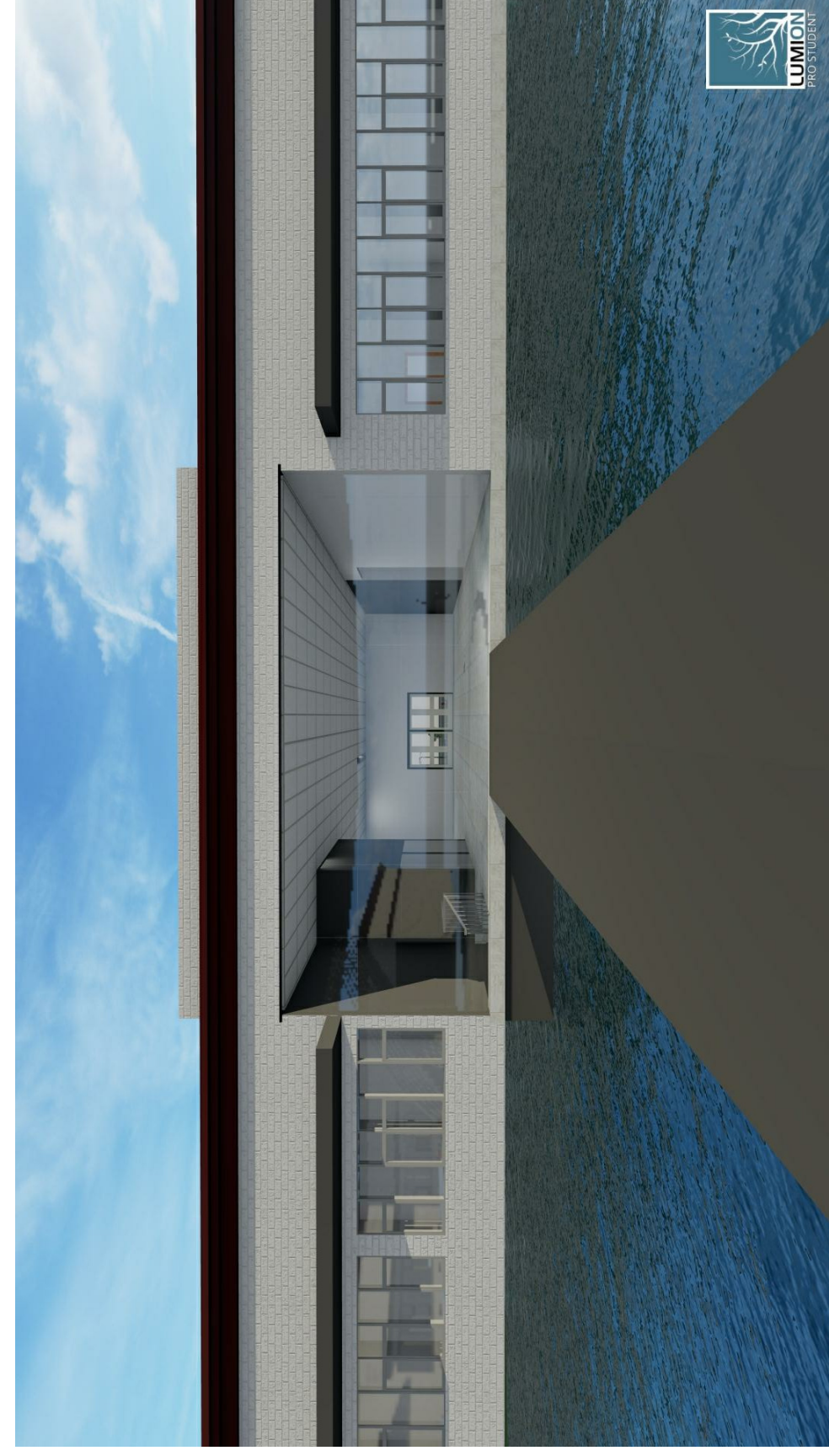
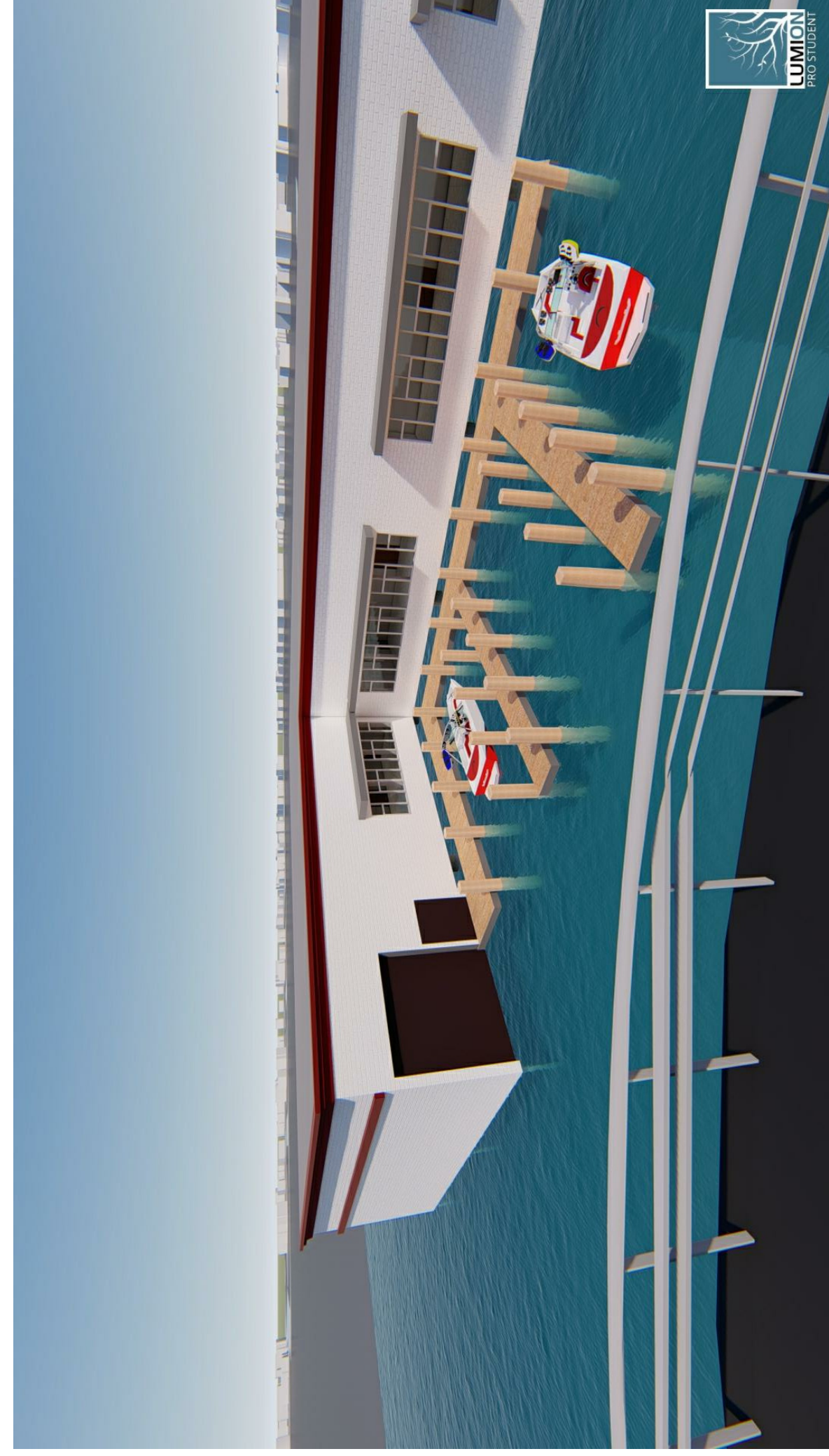
COVERED DOCK



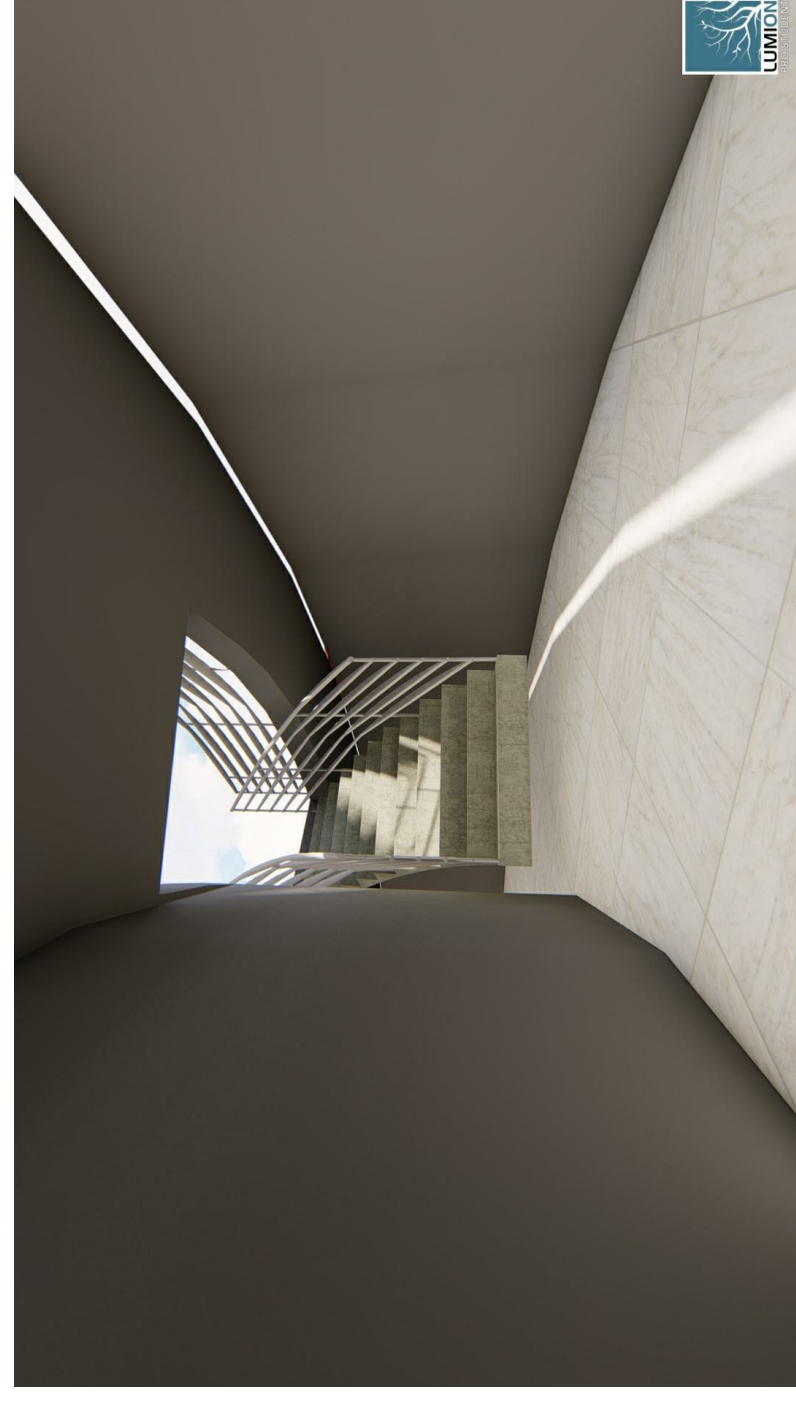
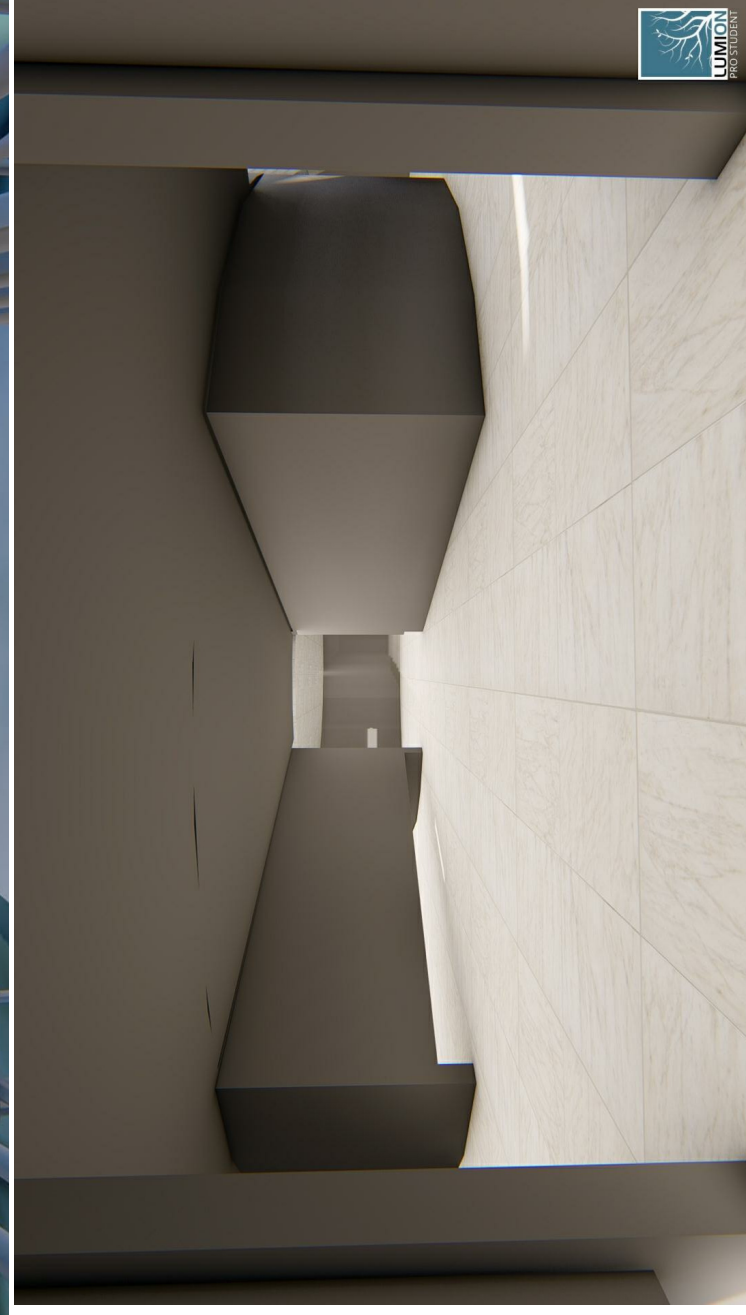
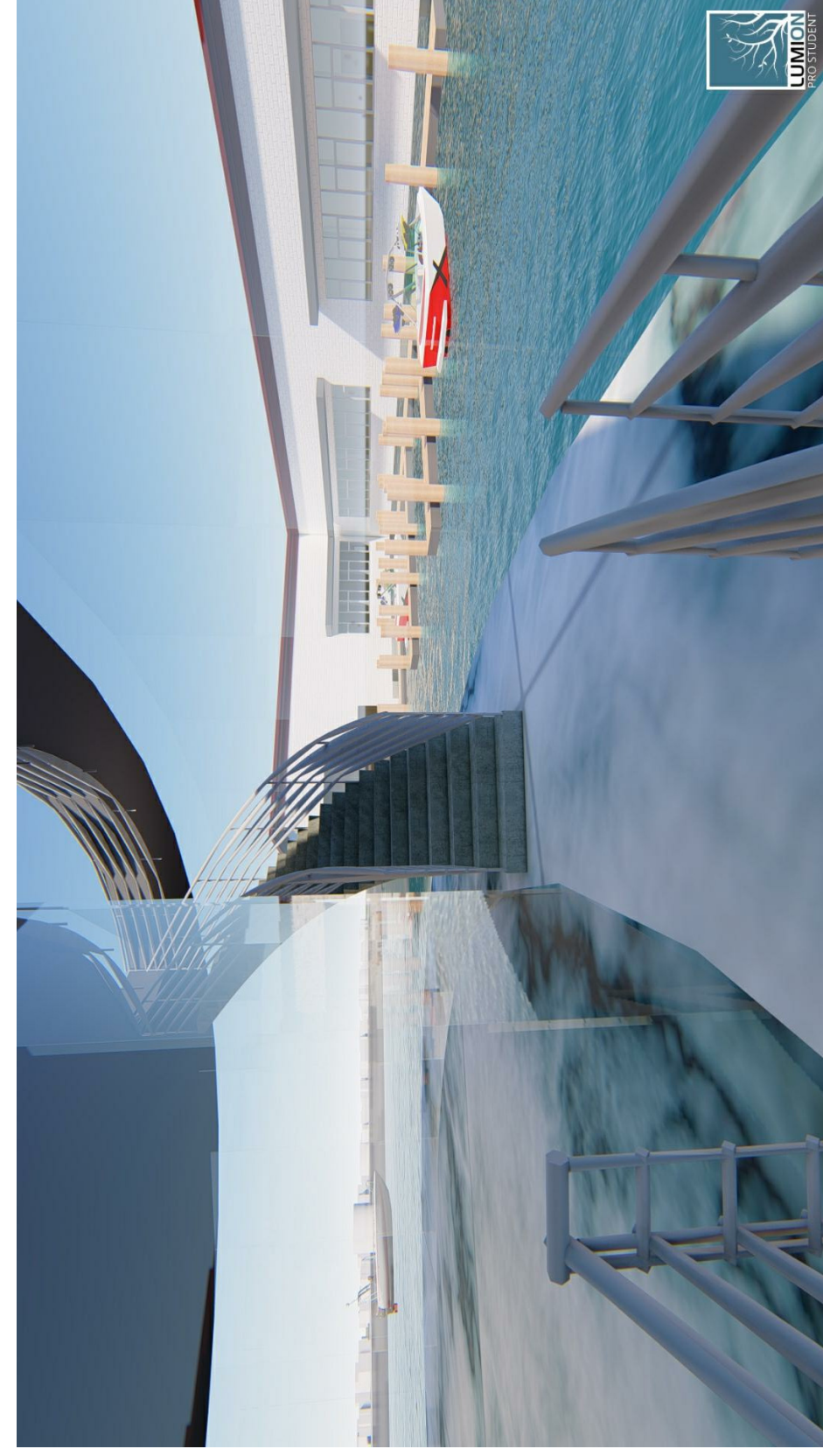
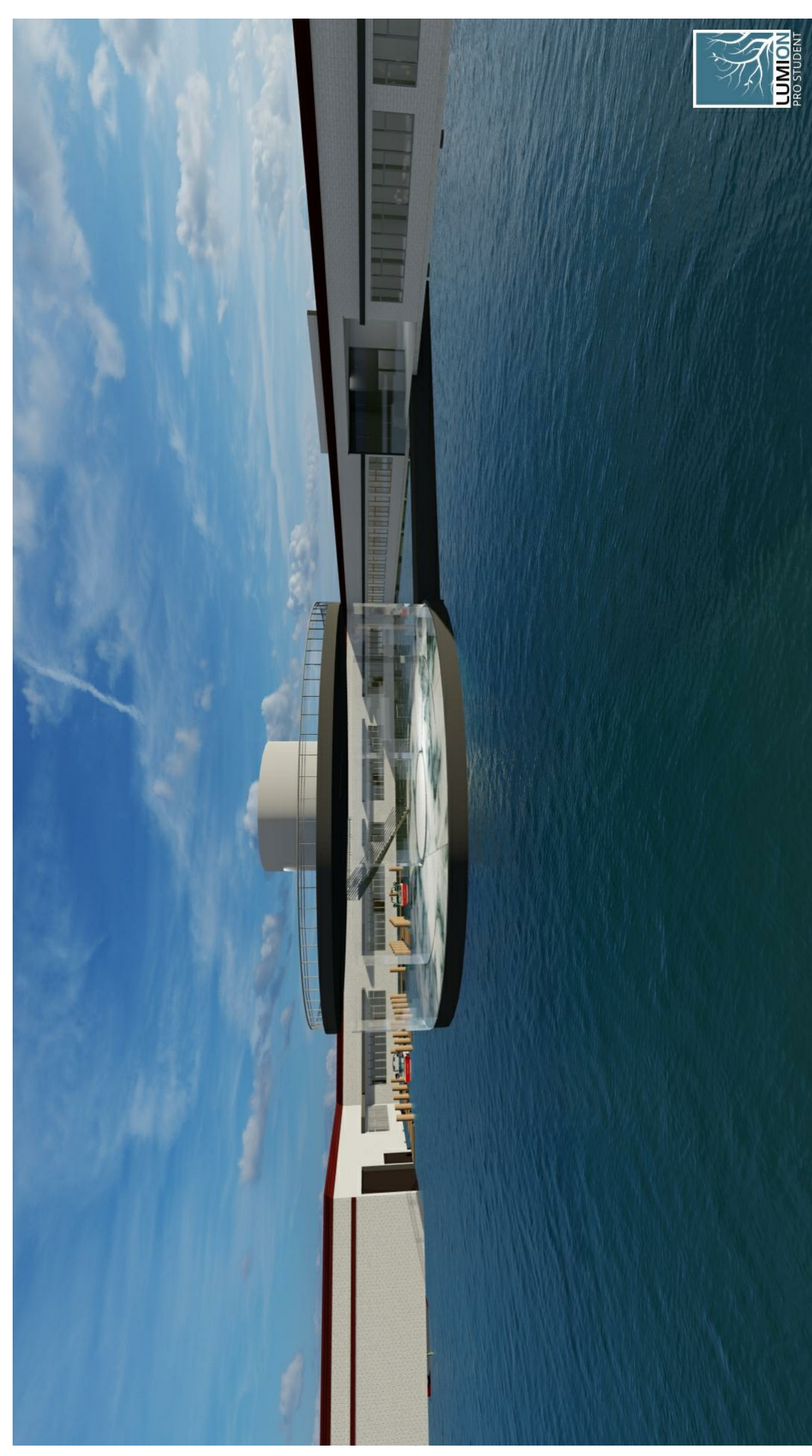
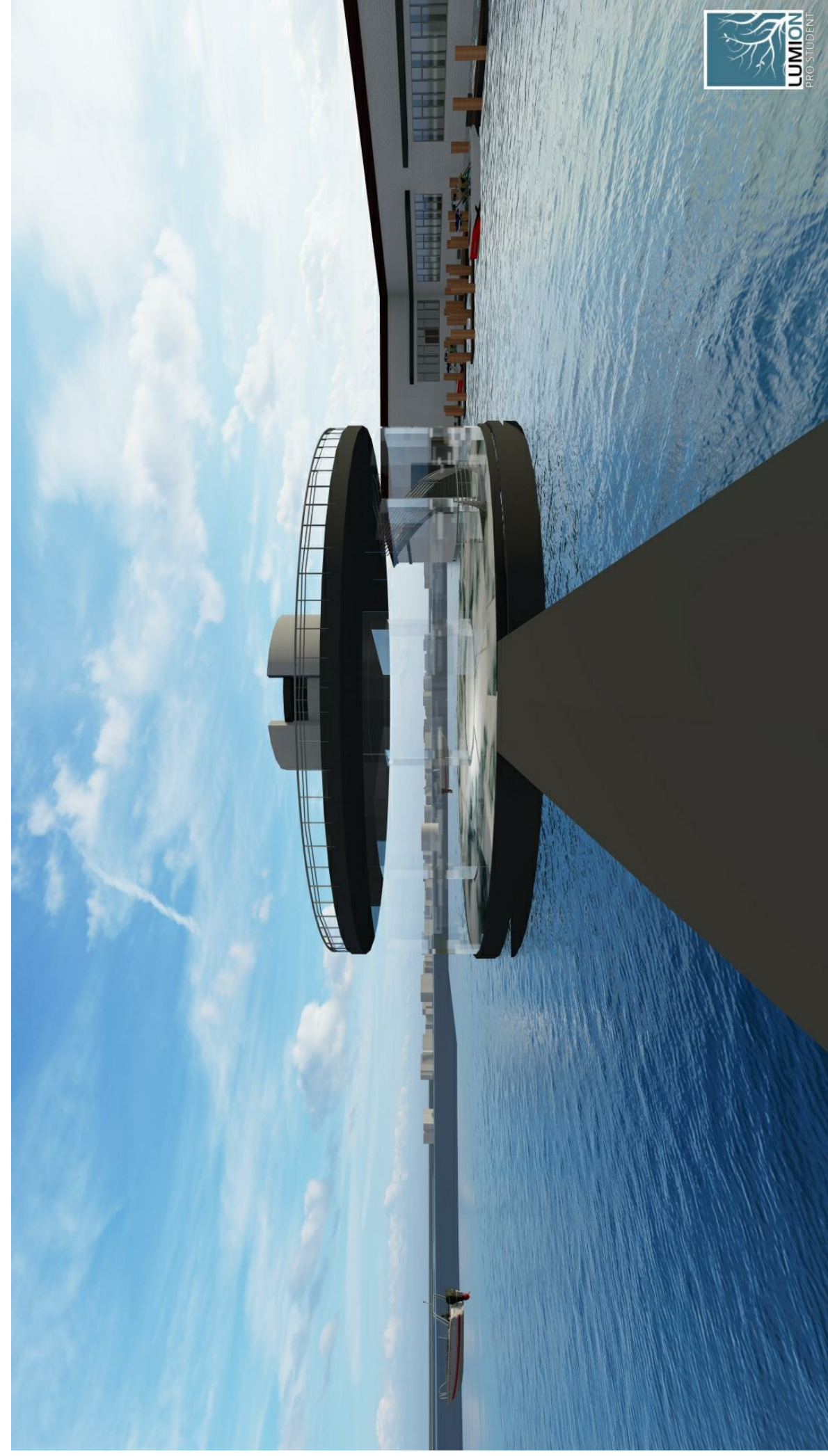
LAB



# REAR EXTERIOR



# AQUARIUM



UNDERGROUND TUNNEL TO THE  
AQUARIUM